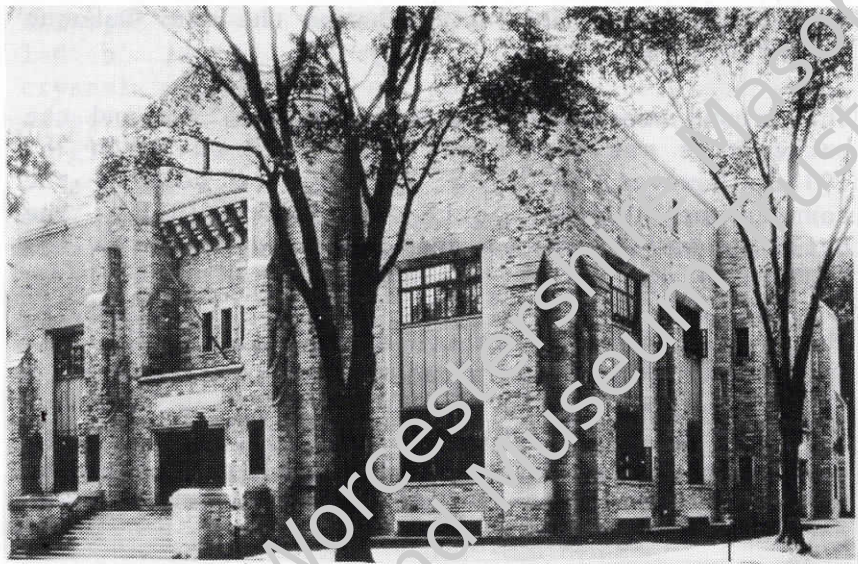


# THE MASONIC TEMPLE

DUBUQUE, IOWA



Ground Breaking.....1930

Laying of Cornerstone.....1931

Dedication.....1932



Freemasonry took root in Dubuque when Dubuque Lodge No. 3 was organized in 1842. It flourished and grew and as many additional organizations were formed, the need for a larger building was evident. In October 1929 the largest and swiftest two-day financial campaign of its kind was held in Dubuque and raised over \$200,000 from the members of the various Masonic bodies to build a new Masonic Temple at the site of 12th and Locust Streets where a magnificent structure would house the many Dubuque Masonic organizations.

The ground was broken on November 10, 1930 and the cornerstone was scheduled to be laid on March 29, 1931. However, a heavy Spring snow delayed the cornerstone laying until April 4, 1931. The building was completed and dedicated on March 15, 1932.

The cost of this architectural superlative was only \$325,000 and today is valued at three million.

The impressive exterior of the building is faced with stone quarried at Lannon, Wisconsin and hence is called Lannon Stone, laid in random ashlar. The entrance doors are of bronze.

As you enter the Grand Foyer you note the massive beamed structure of the ceiling which is a detail present in many of the other rooms throughout the building.

This magnificent Temple now houses the following Masonic organizations:

Dubuque Lodge No. 3, A.F. & A.M.  
Metropolitan Lodge No. 49, A.F. & A.M.  
Mosaic Lodge No. 125, A.F. & A.M.  
Tri-State Lodge No. 673, A.F. & A.M.  
Dubuque Chapter No. 3, Royal Arch Masons  
Dubuque Council No. 3, Royal and Select  
Masters  
Siloam Commandery No. 3, Knights Templar  
Julien Chapter No. 125, Order of Eastern  
Star

Order of Rainbow for Girls  
Allen Chapter, Order of DeMolay  
Oxus Grotto  
Dubuque Hi-12 Club  
Dubuque Shrine Club  
Electa Club

The room to the front left as one enters the building is the ladies' parlor. All of the light fixtures in the building are the originals. The ladies' parlor fixtures are of the finest of crystal prisms. The carpet is the original wool carpet from the 1932 era and the furniture is the original. Many of the davenports are of walnut construction and the tables throughout are walnut, oak, or maple. In the ladies parlor is one of the five fireplaces found throughout the building. This room is used for many small meetings or social gatherings.

The next room on the left is the Temple office and has been modernized to some degree to accommodate business procedures. A walk-in vault of the approximate size of the office is adjacent and accessible from the office.

The large room across the hall is known as the men's parlor complete with trophies of the hunt, a fireplace, comfortably upholstered leather chairs and davenports, the original wool carpet, an organ, a piano, and a television set equipped with a VCR which can be used for special programs.

The lovely mezzanine area of the Grand Foyer often affords placement for musical groups supplying beautiful melodies at receptions. Impressive Christmas decorations surround the fireplace at the holiday season.

The room at the rear center of the building was originally used as a men's reading room in the 30's but the tables that were placed therein seemed to lend themselves most readily to a good card game on almost any afternoon or evening. All games whether they be pool or cards, never include any gambling

per say as it is against Temple rules.

This room has recently been dedicated as the Muellich Memorial Room and now houses many artifacts and memorabilia of the orders. Harry Muellich was one of the more recent Grand Masters of the Masonic Order in Iowa and at the time of his death it was decided to memorialize him in this way. In the cases you will see many bits of memorabilia; on the wall at the rear are plaques bearing the names of those who have served as the leaders of various organizations. The pictures are of Dubuquers who have headed our organizations on a state level. Among the pictures are such persons as Stephen Hempstead who was politically prominent and served as our state's second governor in 1850; Senator William Allison who was also politically prominent in the state and nation; Colonel David Henderson who was prominent in affairs of the nation. It was Allison and Henderson after whom one of our city parks was named.

The room to the left of the mezzanine was originally used as a ladies' card room wherein several tables of bridge would be the order of the afternoon. When our nation experienced an energy crunch in the late 70's the room was then converted to a meeting room to avoid the winter usage of the main lodge room on the second floor. At that time it was also equipped with air-conditioners for summertime comfort. As in most Masonic Temples throughout the world, at least one room is left set for the Masonic ritual. This room is used in this way also.

Across the mezzanine to the North side of the building we find the pool room with its many pool and billiard tables. These are among the finest slate bed tables in the country. Note also the ceiling decoration. It is the original design and shall be preserved in its original state.

In more recent years a chair lift was installed to assist the elderly or handicapped members and

visitors to the second floor or the lower floor with ease. This lift and the wide, ground level entrance on Twelfth Street allow for good accessibility for the handicapped.

At the center of the second floor we find another large foyer which has been used for receptions or periods of relaxation between sessions of degree work. Another of the five beautiful fireplaces is located here.

The next and indeed a most impressive room is the Egyptian Lodge Room. It is decorated and designed in the motif of the ancient formal meeting halls which were prevalent at the time of the inception of Masonry. Here again, all carpet and furnishings are the original. The indirect lighting in the ceiling is controlled from a large instrument panel at the secretary's desk. You will note at the rear of the room are apertures for the projection equipment used in the degree work of the orders.

This area is adjacent to a large locker and storage room on the South and to the North is the ladies' dressing room. These areas are used for relaxation or changing from street dress into robes appropriate to the orders or the formals worn by the ladies.

This is the Grand Lodge Room. It is complete with a pipe organ, footlights, a large assortment of backdrops, overhead lighting and if you will look up into the balcony you will note another projection booth. The seating capacity of this auditorium is 350 as it appears now and with chairs placed on the open floor, it seats 500 people.

Once again overhead lighting in the ceiling and a spotlight directly in the center of the room is above the altar on which you will find the Holy Bible at all meetings. These lights are controlled from a very involved light control panel on the stage area.

Long hallways on either side of the lodge room allow for accessibility to the stage area without disturbing a meeting or similar function in progress.

Descending to the lower level of the Temple we find a large ballroom which also has its own stage area with overhead lights, floodlights, footlights, many backdrops and a light control panel on the stage area. The ballroom is 60 feet by 90 feet and the music of the big name bands still echoes in the room. During the 30's many festive occasions brought in Wayne King, Artie Shaw, Dorothy Lamour and many other well known artists. Local bands like Bus Canfield, Larry Foster, Ray Alderson and Gus Fuhrman made waltzing feet feel happy. The ballroom will also seat 400 for dinner.

An area for our youth is across the hall where we find a recreation room for the Rainbow Girls and the DeMolay Boys. Here we also have ping-pong and pool. The boys have their own small chapter room and girls meet in the lodge room on the mezzanine floor.

The dining room will accommodate 120 for lunch or dinner and our stainless steel kitchen was completed at the time the original building was completed and was most assuredly done with an eye to the future. We have china to serve over 400 people, large storage areas behind the dining room and such things as a potato peeler, coffee urns, steam tables, rack ovens, commercial size stoves and an automatic dishwasher.

The building is available to any outside group that wishes to avail itself of the beauty and convenience of the Temple.

This level also contains a very lovely four-room and bath apartment for the live-in security or maintenance person. It is air-conditioned and has full windows to the exterior with a private entrance from the outside as well as the inside.

Two subterranean basements house boilers, water heaters, storage, a ventilating system connected to the outside throughout the attic and electrical systems.

The building is operated as a non-profit entity and managed by a twelve person board of directors elected from the membership. It is supported by assessments to the bodies housed herein, benefits accrued from estates and trusts in which we were named as beneficiaries and by a Masonic Temple Foundation which held a financial drive in 1982 to assure the financial stability of our Temple for the future.

Over seven hundred families are listed on the rolls of the organizations housed herein.

Private tours of the building are available for groups upon request. Individual tours will also be arranged.

For further information on tours or rentals of these very lovely accommodations, call the Secretary at 582-5107 or 583-6396.

